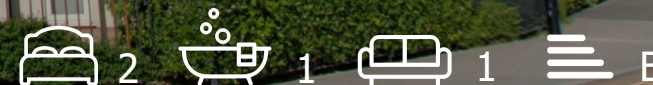


8 Stephenson Court 19 Cambrian Way

Worthing, BN13 1FP

£1,250 Per month

Council Tax Band B



OPEN HOUSE MONDAY 19TH JANUARY -
By Appointment Only. A second floor
apartment located within the ever
popular Cissbury Chase development.

The accommodation comprises,
communal entrance, entrance hall,
open plan lounge kitchen with
integrated appliances, two DOUBLE
bedrooms, and a modern bathroom.

Further benefits include, double glazing
throughout, gas fired central heating
and an ALLOCATED PARKING SPACE.

Situated in Cambrian Way, Cissbury
Chase is a convenient location for any
family being just a short walk from
Durrington-on-Sea mainline railway
station. Worthing leisure centre which
forms part of the Fit4 health and
wellness group, and local shops are
just a short distance away.

ENTRANCE

Communal Entrance Hall

Entrance Hall

Open Plan Lounge Kitchen
21'2 x 18'9 (6.45m x 5.72m)

Bedroom One
14'9 x 9" (4.50m x 2.74m)

Bedroom Two
12'5 x 10'8 (3.78m x 3.25m)

Modern Fitted Bathroom
7'7 x 6'7 (2.31m x 2.01m)

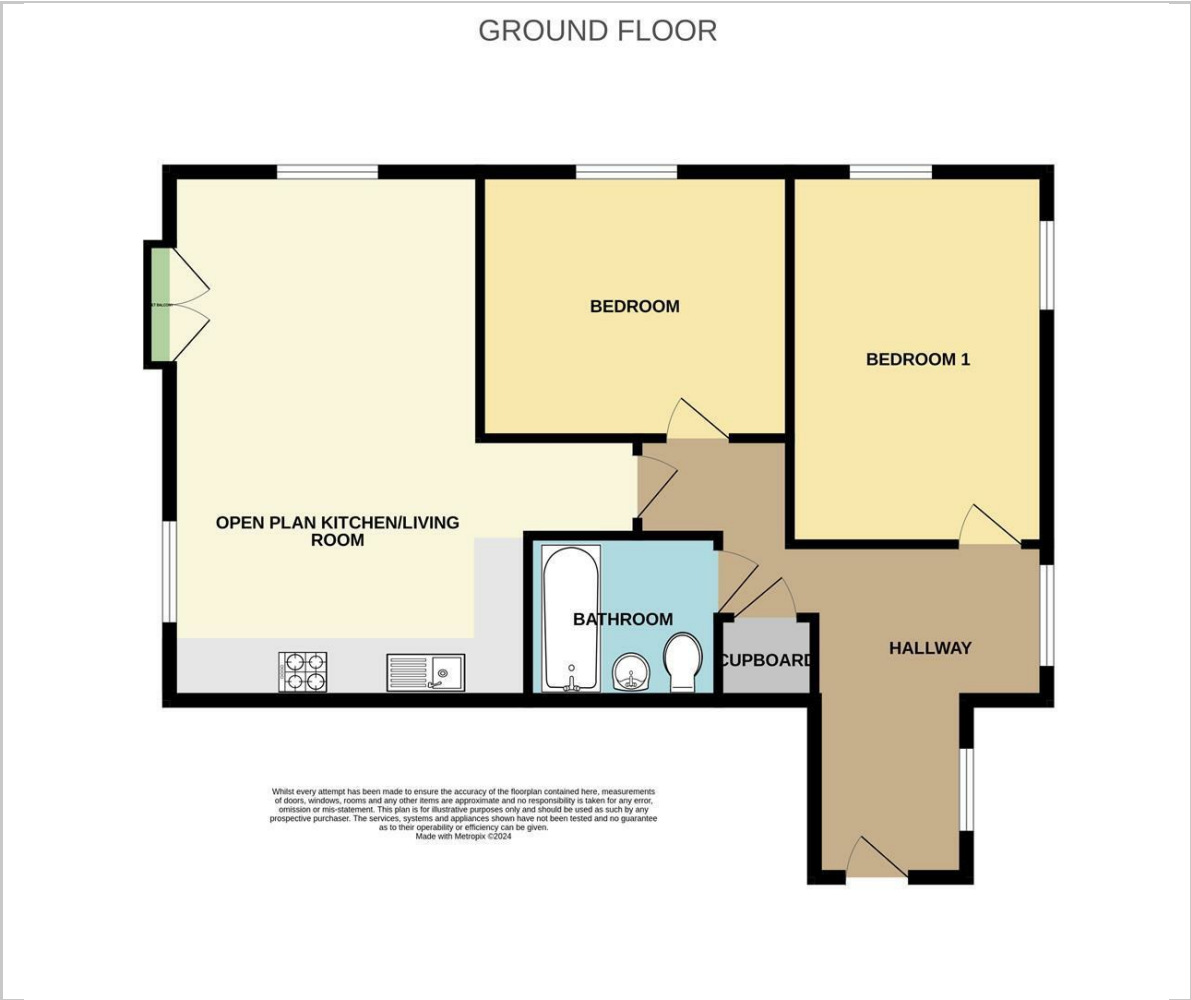
OUTSIDE

Allocated Parking Space





Floor Plan



Viewing

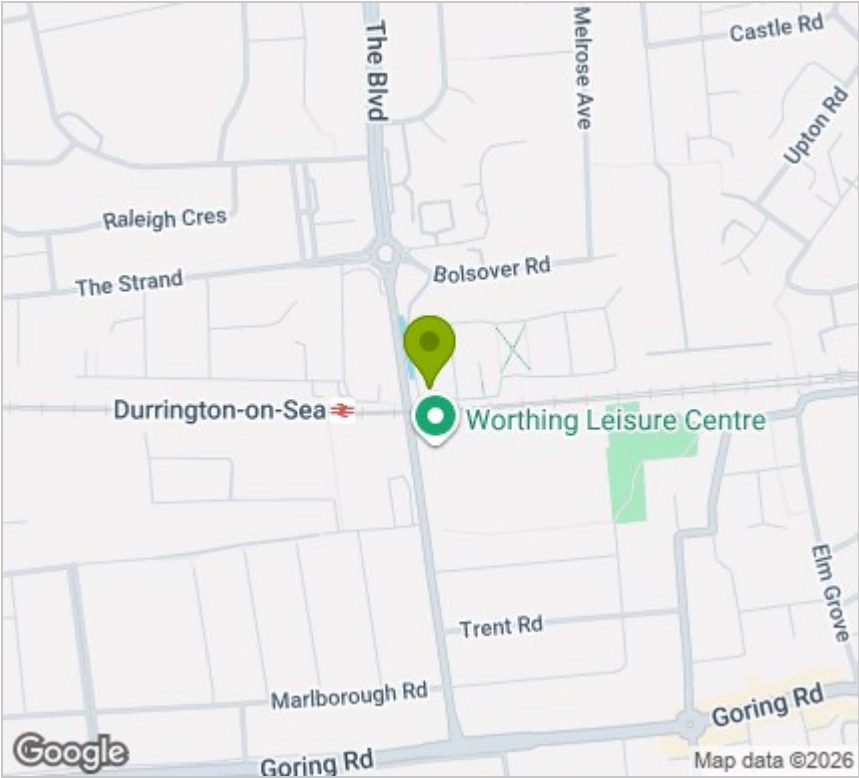
Please contact our Ferring Lettings Office on 01903 958770 if you wish to arrange a viewing appointment for this property or require further information.

These particulars, whilst believed to be accurate are set out as a general outline only for guidance and do not constitute any part of an offer or contract. Intending purchasers should not rely on them as statements of representation of fact, but must satisfy themselves by inspection or otherwise as to their accuracy. No person in this firms employment has the authority to make or give any representation or warranty in respect of the property.

All successful buyers must complete an online identity verification check provided by I am Property. This is a legal requirement in accordance with HMRC's Money Laundering, Terrorist Financing and Transfer of Funds (Information on the Payer) Regulations 2017. The cost of this check is £20 (inc. VAT) per person.



Area Map



Energy Efficiency Graph

